



Vedação Roxtec TB com luva SL TB

Vedação para penetração redonda para um cabo ou tubo único em estruturas de paredes de tanques de aço.

O Roxtec TB (parede de tanque) com SL TB é uma vedação redonda com uma luva de aço para um único cabo ou tubo. A vedação da passagem possui duas metades com camadas de borracha removíveis, o que a torna adaptável a cabos e tubos de diferentes tamanhos. Os encaixes frontais garantem a ancoragem mecânica na luva. A luva SL TB é soldada na estrutura.

- Rápido e fácil de instalar
- Adaptável a cabos e tubos de diferentes tamanhos



Características do produto



Certificado contra fogo



À prova d'água



À prova de gás

Estrutura da instalação



Metal

Tipo de montagem



Solda

Classificações e certificados

Fogo

- A-CLASS de acordo com o Código FTP IMO 2010

Proteção contra vazamento

- Gás: 2 bar (catastrófico) / 1,2 bar (tank boundaries)
- Água: 11 bar (catastrófico) / 6,6 bar (tank boundaries)

Dados de componente de vedação

Componentes de vedação



Lubrificante Roxtec



Kit TB

Para obter informações detalhadas, acesse [roxtec.com](https://www.roxtec.com).



Kits de passagem pré-configurada

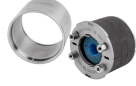
mm/kg



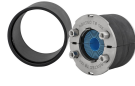
TB 65 KIT AISI316
WOC/AISI316



TB 65 KIT AISI316
WOC/PRIMED



TB 105 KIT AISI316
WOC/AISI316



TB 105 KIT AISI316
WOC/PRIMED

Título	Configuração	Dimensões da abertura Ø	Peso	Art. No.
TB 65 KIT AISI316 WOC/AISI316	1x (8.0-30.0)	80 - 82	1.6	196482
TB 65 KIT AISI316 WOC/PRIMED	1x (8.0-30.0)	80 - 82	1.6	184905
TB 105 KIT AISI316 WOC/AISI316	1x (24.0-54.0)	120 - 122	2.9	200103
TB 105 KIT AISI316 WOC/PRIMED	1x (24.0-54.0)	120 - 122	2.8	200102

The product information provided by Roxtec does not release the purchaser of the Roxtec system, or part thereof, from the obligation to independently determine the suitability of the products for the intended process, installation and/or use.

Roxtec gives no guarantee for the Roxtec system or any part thereof and assumes no liability for any loss or damage whatsoever, whether direct, indirect, consequential, loss of profit or otherwise, occurred or caused by the Roxtec systems or installations containing components not manufactured by an authorized manufacturer and/or occurred or caused by the use of the Roxtec system in a manner or for an application other than for which the Roxtec system was designed or intended.

Roxtec expressly excludes any implied warranties of merchantability and fitness for a particular purpose and all other express or implied representations and warranties provided by statute or common law. User determines suitability of the Roxtec system for intended use and assumes all risk and liability in connection therewith. In no event shall Roxtec be liable for indirect, consequential, punitive, special, exemplary or incidental damages or losses.

The Roxtec products are offered and sold in accordance with the conditions of the Roxtec General Terms of Sales. The latest version of the Roxtec General Terms of Sales can be downloaded from <https://www.roxtec.com/en/about-us/about-roxtec/general-terms-of-sales/>

We reserve the right to make changes to the product and technical information without further notice. Any errors in print or entry are no claims for indemnity. The content of this publication is the property of Roxtec International AB and is protected by copyright.

This document was generated on: 2024-04-27